



Portable Power

# Portable Air Compressors

Product Range



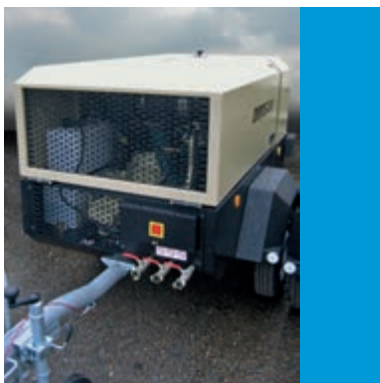
# Doosan Portable Air Compressors

## Performance you can trust

Doosan Portable Power offers a complete line of [CE-compliant portable compressors](#): 24 different models, with [free air deliveries](#) between 2 and 45m<sup>3</sup>/min and operating pressures between 7 and 25 bar.

Each compressor is "built to be used", offering the [highest level of durability, productivity and serviceability](#).

This proven reliability and retained value makes a Doosan Portable Power compressor a [wise investment](#) in today's competitive environment.



### High Ambient capability

All CE-compliant models have an LAT value of 46°C. For applications in [hot climates](#) outside the CE territory, the [high ambient temperature option](#) offers an [LAT of 52°C](#).

### Large fuel tank capacity

Well-positioned fuel tanks with large filler size, [limiting fuel spillage risk](#).

# Portable Air Compressors Specifications



Model		7/20	7/26E	7/31E	7/41	7/51	7/70
<b>COMPRESSOR</b>							
Free air delivery	m <sup>3</sup> /min (cfm)	2 (65)	2.5 (90)	3 (105)	4 (141)	5 (176)	7.1 (252)
Rated operating pressure	bar (psi)	7 (100)	7 (100)	7 (100)	7 (100)	7 (100)	7 (100)
<b>INTERNAL SETTINGS</b>							
Maximum system pressure	bar (psi)	8.6 (125)	8.6 (125)	8.6 (125)	8.6 (125)	8.6 (125)	8.6 (125)
Safety valve setting	bar (psi)	10 (145)	10 (145)	10 (145)	10 (145)	10 (145)	10.0 (145)
<b>ENGINE</b>							
Make		Kubota	Yanmar	Yanmar	Yanmar	Yanmar	Yanmar
Model		3IRJ5N	3IRH2NS	3IRH8N	4IRH8N	4IRI8NE-2	4IRI8NE-2
Number of cylinders		3	3	3	4	4	4
Full load speed	rpm	3000	2800	2800	2800	2400	2300
Power	kW (HP)	17.5 (23.5)	21.2 (28.5)	26 (34.8)	34.8 (47)	50.2 (67.3)	59.2 (80)
Electrical	volts	12	12	12	12	12	12
Cooling		Water	Water	Water	Water	Water	Water
Fuel tank capacity	litres	26	50	50	40	50	112
Air outlets BSPT (British Standard Pipe Thread)		2x3/4"	2x3/4"	2x3/4"	2x3/4"	3x3/4"	1x1 1/4"
Emissions Tier Level		Stage IIIA	Stage IIIA	Stage IIIA	Stage IIIA	Stage IIIA	Stage IIIA
<b>SOUND LEVEL DATA</b>							
Fully compliant to outdoor noise directive 2000/14/EC (2006)	L <sub>WA</sub>	97	98	98	98	98	99
<b>TYRES</b>							
Tyre size		155 R13	155 R13	155 R13	155 R13	155 R13	185 R13
Number of wheels		2	2	2	2	2	2
<b>DIMENSIONS (WITH RUNNING GEAR)</b>							
Length drawbar up/drawbar down (fixed height)	mm	2611	2923	2923	3052	3457	3561
Length min/max (adjustable height)	mm	2695 / 2905	3213 / 3369	3213 / 3369	3322 / 3577	3537 / 3827	3806 / 4052
Width	mm	1272	1390	1390	1390	1520	1700
Height	mm	1130	1235	1235	1369	1486	1540
Ground clearance	mm	205	220	220	250	250	250
Weight (net) fixed/adjustable	kg	430	575 / 590	595 / 610	673 / 706	870 / 920	1250 / 1345
Weight (working) fixed/adjustable	kg	445	615 / 630	635 / 650	706 / 739	905 / 955	1345 / 1440
<b>DIMENSIONS (ON SHIPPING SUPPORT)</b>							
Length	mm	1443	1764	1764	1785	2128	2470
Width	mm	940	940	940	940	1070	1200
Height	mm	930	1145	1145	1204	1230	1420
Weight (net)	kg	385	495	515	553	760	1190
Weight (working)	kg	400	535	555	586	795	1290
Unbraked running gear - deduct fixed/adjustable	kg	25	35 / 30	35 / 30	NA	NA	NA
Generator option - add	kg	NA	53	53	53	53	53

\* Or 215/75 R16 \*\* 225/75 R16 for France

## Factory Fitted Option (see table for availability per model)



### Variable height running gear

**Feature:** Comprehensive running gear configuration with EC lighting requirements on all road tow running gear 7/20 through to 7/170.

**Benefit:** Gives towing height flexibility.



### Less running gear – Shipping support

**Feature:** Temporary metal support to ensure safe transit of the unit to the customer.

**Benefit:** Reduced risk of machine damage.



### Less running gear – Permanent support

**Feature:** Permanent metal support for truck mounted gear.

**Benefit:** Typically ordered with truck mounted.



	12/56	14/85	10/105	9/110	7/120	14/115	10/125	7/170	12/150
150)	5.6 (200)	8.5 (300)	10.3 (365)	10.6 (375)	12 (425)	11.3 (400)	12.7 (450)	17 (600)	14.9 (526)
200)	12.1 (175)	14 (200)	10.3 (150)	8.6 (125)	7 (100)	14 (200)	10.3 (150)	7 (100)	12 (175)
225)	13.0 (190)	15.5 (225)	12.1 (175)	10.3 (150)	8.6 (125)	15.5 (225)	12.1 (175)	8.6 (125)	12.7 (184)
245)	15.0 (217)	17.2 (250)	13.8 (200)	13.8 (200)	10.3 (150)	17.2 (250)	13.8 (200)	12.0 (175)	15 (218)
Manufacturer	Yanmar	John Deere	John Deere	John Deere	John Deere	John Deere	John Deere	John Deere	Cummins
Model	4IR18TE	4IRD5AE	4IRD5AE	4IRD5AE	4IRD5AE	6IRF8AE	6IRF8AE	6IRF8AE	QSB 6.7 FR91440
Weight	4	4	4	4	4	6	6	6	6
Capacity (L)	2300	2200	2200	2200	2200	2200	2200	2200	2000
Capacity (CFM)	59.2 (79.4)	93 (125)	93 (125)	93 (125)	93 (125)	129 (173)	129 (173)	129 (173)	164 (220)
Pressure (bar)	12	24	24	24	24	24	24	24	24
Water Capacity (L)	Water	Water	Water	Water	Water	Water	Water	Water	Water
Dimensions (mm)	112	219	219	219	219	276	276	276	310
Dimensions (in)	1x1¼", 3x¾"	1x1¼", 3x¾"	1x1¼", 3x¾"	1x1¼", 3x¾"	1x1¼", 3x¾"	1x2", 1x1¼", 2x¾"	1x2", 1x1¼", 2x¾"	1x2", 1x1¼", 2x¾"	1x2", 1x1¼", 2x¾"
Stage	Stage IIIA	Stage IIIA	Stage IIIA	Stage IIIA	Stage IIIA	Stage IIIA	Stage IIIA	Stage IIIA	Stage IIIA
Options	99	99	99	99	99	99	99	99	99
Model	185 R14 C	205/75 R16	205/75 R16	205/75 R16	205/75 R16 *	205/75 R17.5	205/75 R17.5	205/75 R17.5 **	225/75 R16
Options	2	2	2	2	2	2	2	2	2
Weight	3565	4120	4120	4120	4120	4852	4852	4852	4847
Capacity (L)	3806 / 4062	4262 / 4478	4262 / 4478	4262 / 4478	4262 / 4478	4793 / 4998	4793 / 4998	4793 / 4998	4995 / 5155
Weight	1700	1985	1985	1985	1985	1985	1985	1985	2130
Capacity (L)	1545	1810	1810	1810	1810	1890	1890	1890	2122
Weight	250	250	250	250	250	250	250	250	293
Capacity (L)	1250 / 1290	1935 / 1965	1935 / 1965	1935 / 1965	1935 / 1965	2570 / 2650	2570 / 2650	2570 / 2650	2566 / 2618
Capacity (L)	1385	1345 / 1385	2121 / 2151	2121 / 2151	2121 / 2151	2770 / 2850	2770 / 2850	2770 / 2850	2816 / 2868
Weight	2475	2675	2675	2675	2675	3122	3122	3122	3350
Weight	1200	1380	1380	1380	1380	1550	1550	1550	1590
Weight	1427	1400	1400	1400	1400	2055	2055	2055	1700 / 2130
Weight	1196	1660	1660	1660	1660	2420	2420	2420	2233
Weight	1296	1830	1830	1830	1830	2745	2745	2745	2483
Weight	NA	NA	NA	NA	NA	NA	NA	NA	NA
Weight	53	NA	NA	NA	NA	NA	NA	NA	NA



**Permanent mount**  
 Support replacing the running  
 when the machine is to be



**Single colour paint and laser etching option for canopy**  
 Feature: Upper enclosure to customer colour.  
 Benefit: Allows customer specific livery and reduces the risk of theft.



**Jockey wheel**  
 Feature: All units have a jockey wheel as standard. (Except 7/20, not applicable on dual axle models).  
 Benefit: Helps on-site manoeuvrability.



**Lubricator**  
 Feature: A built-in lubricator option helps to oil pneumatic tools. It is available up to the 7/170, excluding the 14/115 and 10/125.  
 Benefit: Increases tool reliability and life.



**Wheel chocks**  
 Feature: 2 wheel chocks on the enclosure.  
 Benefit: A legal requirement in many areas can help prevent



9/275	9/305	12/250	17/240	21/220	25 / 280	10 / 455	25 / 330
27 (950)	29.9 (1060)	25 (883)	23.3 (825)	21.5 (750)	28.3 (1000)	45.3 (1600)	33.1 (1170)
8.6 (125)	8.6 (125)	12 (175)	17.2 (250)	21 (300)	25.1 (365)	10.3 (150)	24 (350)
10.3 (150)	10.3 (150)	13.8 (200)	19.0 (275)	22.4 (325)	27.5 (400)	12.1 (175)	25.9 (375)
15 (217)	15 (217)	15 (217)	25 (362)	25 (362)	30.3 (440)	13.7 (200)	29.3 (425)
Cummins	Cummins	Cummins	Cummins	Cummins	Caterpillar	Cummins	Caterpillar
QSL9	QSL9	QSL9	QSL9	QSL9	C13	QSX 15	C15
6	6	6	6	6	6	6	6
1800	1800	1800	1800	1800	1800	1800	1800
227 (304)	254 (340)	254 (340)	254 (340)	254 (340)	354 (475)	418 (560)	403 (540)
24	24	24	24	24	24	24	24
Water	Water	Water	Water	Water	Water	Water	Water
485	485	485	485	485	681	870	874
1x2", 2x1¼"	1x2", 2x1¼"	1x2", 2x1¼"	1x2", 2x1¼"	1x2", 2x1¼"	1x3"	1x3"	1x3"
Stage IIIB	Stage IIIB	Stage IIIB	Stage IIIB	Stage IIIB	Stage IIIB	Stage IIIA	Stage IIIA
100	100	100	100	100	NA	NA	NA
750/16 6PR	750/16 6PR	750/16 6PR	750/16 6PR	750/16 6PR	215/75 R17.5H	215/75 R17.5H	215/75 R17.5H
4	4	4	4	4	4	4	4
4408 / 5841	4408 / 5841	4408 / 5841	4408 / 5841	4408 / 5841	5150 / 6735	5840	5840
NA	NA	NA	NA	NA	NA	NA	NA
2120	2120	2120	2120	2120	2123	2290	2290
2497	2497	2497	2497	2497	2553	2540	2540
288	288	288	288	288	200	200	200
4760	4760	4760	4960	4960	6884	7302	6774
5160	5160	5160	5360	5360	7721	8069	7600
4408	4408	4408	4408	4408	4915	5670	5670
2120	2120	2120	2120	2120	2123	2290	2290
2504	2504	2504	2504	2504	2156	2210	2210
4660	4660	4660	4860	4860	6455	7030	6502
5060	5060	5060	5260	5260	7291	7797	7234
NA	NA	NA	NA	NA	NA	NA	NA
NA	NA	NA	NA	NA	NA	NA	NA



chocks with attachments to lower  
requirement in Germany, these chocks  
machine movement on a slope.



**Light weight compressor mounted hose reel**  
**Feature:** Allows the safe and compact storage of 20 m of 3/4" hose. Available on certain models only.  
**Benefit:** Longer hose life and reliability, increased convenience for the operator.



**Toolbox**  
**Feature:** A built-in storage compartment designed to take a DCT30 (30 kg) breaker.  
**Benefit:** Reduced risk of theft and facilitates transport.



**6 kVA generator option**  
**Feature:** This feature significantly increases compressor flexibility by supplying electrical output in addition to compressed air. Electrical tools or appliances can be operated simultaneously with pneumatic equipment.

# Features and options

Features and options (not exhaustive)	7/20	7/26E	7/41	7/51	7/71	7/120	7/170	12/150	9/275	10/455	25/280
		7/31E			12/56	9/110	10/125		9/305	25/330	
						10/105	14/115		12/250		
						14/85			17/240		
									21/220		
Fixed height unbraked running gear	Opt	Opt	-	-	-	-	-	-	-	-	-
Fixed height braked running gear	Std	Std	Std	Std	Std	Std	Std	Std	-	-	-
Variable height unbraked running gear (incl. side bars)	Opt	Opt	-	-	-	-	-	-	-	-	-
Variable height braked running gear (incl. side bars)	Opt	Opt	Opt	Opt	Opt	Opt	Opt	Opt	-	-	-
Wagon wheel type running gear	-	-	-	-	-	-	-	-	Std	Std	Std
Less running gear (base support mount with central drains)	Opt	Opt	Opt	Opt	Opt	Opt	Opt	Opt	Opt	Opt	Opt
Prop stand	Std	Opt	Opt	Opt	-	-	-	-	-	-	-
Jockey wheel	Opt	Std	Std	Std	Std	Std	Std	Std	-	-	-
Roadlights	Opt	Opt	Opt	Opt	Opt	Opt	Opt	Opt	-	-	-
Laser etching (rear canopy panel)	-	Opt	Opt	Opt	Opt	-	-	-	-	-	-
Lubricator	Opt	Opt	Opt	Opt	Opt	Opt	Opt	-	-	-	-
Toolbox	-	Opt	Opt	Opt	Opt	Std	Std	Std	-	-	-
Aftercooler and water separator	-	Opt	Opt	Opt	Opt	Opt	Opt	Opt	Opt	Opt	Opt
Aftercooler, water separator and filters (IQ) CE	-	Opt	Opt	Opt	Opt	Opt	Opt	Opt	Opt	Opt	Opt
Aftercooler, water separator, filters and reheater	-	-	-	Opt	Opt	-	-	-	-	-	-
Spark arrestor	-	Opt	Opt	Opt	Opt	Opt	Opt	Opt	Opt	Opt	Opt
Overspeed valve	-	Opt	Opt	Opt	Opt	Opt	Opt	Opt	Opt	Opt	Opt
Hose reel	-	Opt	Opt	Opt	Opt	-	-	-	-	-	-
Folding lift bail	Std	Std	Std	Std	Std	Std	Std	Std	Std	Std	Std
6 kVA generator (simultaneous operation)	-	Opt	Opt	Opt	Opt	-	-	-	-	-	-
Cold start	-	Opt	Opt	Opt	Opt	Opt	Opt	-	Opt	Opt	Opt
Wheel chocks	Opt	Opt	Opt	Opt	Opt	Opt	Opt	Opt	-	-	-
Clip for vehicle registration plate	Opt	Opt	Opt	Opt	Opt	-	-	-	-	-	-
Custom colour (RAL code required)	Opt	Opt	Opt	Opt	Opt	Opt	Opt	Opt	Opt	Opt	Opt
Wheel nut position indicator	Opt	Opt	Opt	Opt	Opt	Opt	Opt	Opt	Opt	-	-
Dual pressure switch (>7 bar units)	-	-	-	-	Opt	Opt	Opt	Opt	Opt	Opt	Std
High ambient temperature version (LAT 52°C)	-	Opt	Opt	Opt	Opt	Opt	Opt	-	-	-	-
Bunded base	Opt	Opt	Opt	-	-	-	-	Std	Std	Std	Std
Forklift pockets	-	-	-	-	-	-	-	-	Std	-	Std
"Tough Top" canopy	-	Opt	Opt	-	-	-	-	-	-	-	-



## Wheel nut position indicator

**Feature:** The checkpoints are fixed to the wheel nuts and set in a recognizable pattern.

**Benefit:** Safety precaution – should a wheel nut loosen, the set pattern will be broken.



## Spark arrestor

**Feature:** Diesel engine exhaust spark arrestors are a basic but key safety feature for hazardous area applications.

**Benefit:** Eliminates the risk of exhaust sparks.



## Overspeed valve

**Feature:** Should the engine begin to accelerate due to volatile vapours in the atmosphere, an overspeed valve closes the air intake to the engine.

**Benefit:** Prevents damage due to overspeed.



### Serviceability & internal accessibility

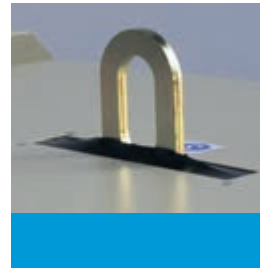
Serviceability is excellent, with [easy access](#) to all [maintenance points](#). All areas have been carefully designed for ease of inspection, maintenance and repair. Service intervals for different compressor components have been rationalized to [reduce associated costs](#) for the customer and increase utilization in the plant hire industry.



**7/41+**  
Feature: 7/41 with "Tough Top" canopy.

### Security

Features include a [lockable canopy](#) and lockable [steel instrument panel cover](#). In addition, a folding lift bail [reduces the risk of theft](#) by keeping the lifting eye within the compressor enclosure.



### Modular design and flexibility

Highly modular design allows optional equipment to be added easily. The [wide range of options](#) available allow the machines to be adapted to the specific application, such as fitting of an [aftercooler](#) system for abrasive blasting, to a personal paint scheme in the customer's livery.



### Easy to operate

Doosan Portable Power compressors have an intuitive, simple key-start sequence. [Ideal for rental companies](#) because of the [reduced risk](#) of machine abuse by untrained operators. The [user-friendly control panel](#) offers an open layout of instruments and warning indicators.

# The Portable Air Compressors journey at Doosan starts here



## Peace of mind

All Doosan compressor products offer a **1 year or 2000 hours warranty**. The **airend** carries a **standard 2 years or 4000 hours warranty**. Conditional on the continued use of genuine parts, fluids and filters and the machine being serviced at the correct specified intervals by an authorized Doosan Portable Power distributor, the airend warranty can be **extended to 5 years or 10000 hours**. This warranty option **enhances the resale value** through the ability to transfer the warranty from one owner to the next. Some **engines** can also be included in the **5 year coverage**.

## Aftermarket solutions

- Dealer stocking programme for frequently-used parts
- Express availability for other parts
- Supporting you and your dealer with troubleshooting expertise on difficult service problems

## Financial solutions

Financing and leasing options tailored to meet your individual business needs. Our streamlined loan application and credit approval process can quickly make your business plans a reality.

With Doosan Portable Power, you are not just buying a piece of equipment. You are investing in the strength and expertise of Doosan Portable Power and its people. From engineers and factory technicians, to field representatives and your dealer, we support your purchase. We are committed to helping you realize maximum value job after job, day after day. Wherever you see a piece of Doosan Portable Power equipment, you'll know that all of Doosan Portable Power team is behind it.

Our industry-leading support system will keep you up and running for as long as you own your Doosan Portable Power equipment. Doosan Portable Power is committed to supporting each product throughout its life. We are committed to offer you an invaluable source of product information, financial service, training, technical service bulletins, service, parts and more...

[www.doosanportablepower.com](http://www.doosanportablepower.com)

**More than compressors**



Specifications and design are subject to change without notice. Pictures of Doosan Portable Power products may show other than standard equipment.



**Portable Power**

